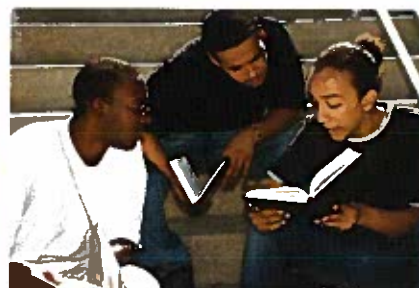
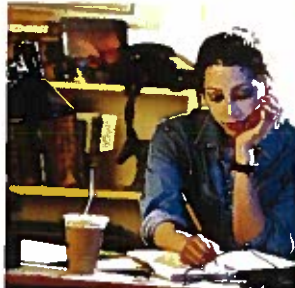


Regents Review 2.0 2011 Station Schedule



**Regents
Review 2.0**

**REGENTS
REVIEW 2.0**
is a series
of test-prep
programs for
high school
students who
plan to take
New York
State Regents
exams in the
Spring of
2011.

Airing from 4:30-5:30 pm Daily:

Monday, May 2nd - English

Tuesday, May 3rd - Integrated Algebra

Wednesday, May 4th - Geometry

Thursday, May 5th - Algebra 2/Trigonometry

Friday, May 6th - Earth Science

Monday, May 9th - Living Environment

Tuesday, May 10th - Chemistry

Wednesday, May 11th - Physics

Thursday, May 12th - Global History & Geography

Friday, May 13th - US History & Government

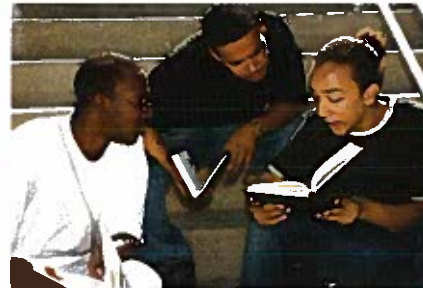
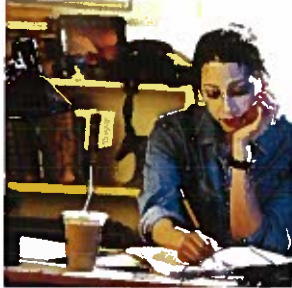
Monday, May 16th - Spanish

Tuesday, May 17th - French

Wednesday, May 18th - Italian

Thursday, May 19th - German

Regents Review 2.0 2011 Station Schedule



**Regents
Review 2.0**

**REGENTS
REVIEW 2.0**
is a series
of test-prep
programs for
high school
students who
plan to take
New York
State Regents
exams in the
Spring of
2011.

Wednesday, May 11

- 1:00 am - English
- 2:00 am - Integrated Algebra
- 3:00 am - Living Environment

Thursday, May 12

- 1:00 am - Geometry
- 2:00 am - Algebra 2 /
Trigonometry
- 3:00 am - Living Environment

Friday, May 13

- 1:00 am - Earth Science
- 2:00 am - Living Environment

Wednesday, May 18

- 1:00 am - Chemistry
- 2:00 am - Physics
- 3:00 am - English

Thursday, May 19

- 1:00 am - Global History &
Geography
- 2:00 am - US History &
Government
- 3:00 am - Earth Science

Friday, May 20

- 1:00 am - Spanish
- 2:00 am - French

Wednesday, May 25

- 1:00 am - English
- 2:00 am - Integrated Algebra
- 3:00 am - French

Thursday, May 26

- 1:00 am - Geometry
- 2:00 am - Algebra 2 /
Trigonometry
- 3:00 am - Spanish

Friday, May 27

- 1:00 am - Italian
- 2:00 am - German

Wednesday, June 1

- 1:00 am - Chemistry
- 2:00 am - Physics
- 3:00 am - German

Thursday, June 2

- 1:00 am - Global History &
Geography
- 2:00 am - US History &
Government
- 3:00 am - Italian

Friday, June 3

- 2:00 am - Spanish